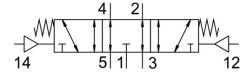
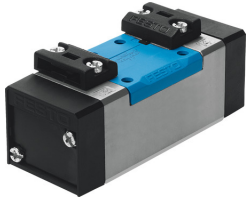


Pneumatic valve VL-5/3E-D-1-C

Part number: 151011

FESTO



Data sheet

Feature	Value
Type code	VL
Valve function	5/3, exhausted
Actuation type	Pneumatic
Width	42 mm
Standard nominal flow rate	1200 l/min
Pneumatic working port	Sub-base, size 1 as per ISO 5599-1 G1/4
Operating pressure	-0.9 bar ... 16 bar
Structural design	Piston gate valve
Reset method	Mechanical spring
Nominal width	8 mm
Width dimension	43 mm
Exhaust air function	With flow control option
Sealing principle	Soft
Mounting position	Any
Conforms to standard	ISO 5599-1
Manual override	None
ISO code	108
Type of control	Direct
Flow direction	Reversible
Symbol	00991021
Lap	Overlap
Pilot pressure	3 bar ... 16 bar
Switching time off	45 ms
On switching time	7 ms
Operating medium	Compressed air as per ISO 8573-1:2010 [7:4:4]
Information on operating and pilot media	Operation with oil lubrication possible (required for further use)
Vibration resistance	Transport application test with severity level 1 as per FN 942017-4 and EN 60068-2-6
Shock resistance	Shock test with severity level 2 as per FN 942017-5 and EN 60068-2-27
Temperature of medium	-10 °C ... 60 °C
Noise level	85 dB(A)
Pilot medium	Compressed air as per ISO 8573-1:2010 [7:4:4]
Ambient temperature	-10 °C ... 60 °C
Product weight	320 g

Feature	Value
Type of mounting	On sub-base With through-hole
Pilot air port 12	Sub-base, size 1 as per ISO 5599-1
Pilot air port 14	Sub-base, size 1 as per ISO 5599-1
Pneumatic connection 1	Sub-base, size 1 as per ISO 5599-1
Pneumatic connection 2	Sub-base, size 1 as per ISO 5599-1
Pneumatic connection 3	Sub-base, size 1 as per ISO 5599-1
Pneumatic connection 4	Sub-base, size 1 as per ISO 5599-1
Pneumatic connection 5	Sub-base, size 1 as per ISO 5599-1
Note on materials	RoHS-compliant
Seals material	HNBR NBR
Housing material	Die-cast aluminum